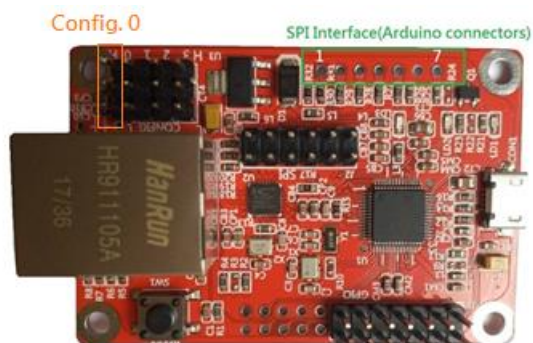


ECM-SK 搭配 STM32 实现 EtherCAT 控制范例

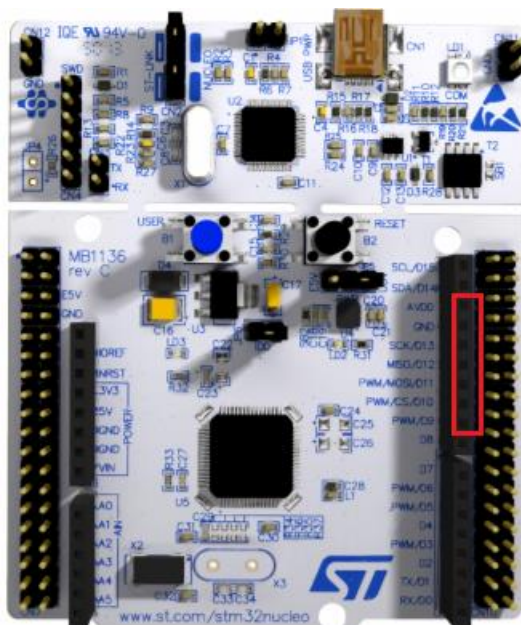
ECM-SK Arduino Connector



Pin 1	Pin 2	Pin 3	Pin 4	Pin 5	Pin 6	Pin 7
Busy (Output)	SPI_/SS	SPI_MOSI	SPI_MISO	SPI_CLK	GND	Power In (3.3V)

* ECM-SK Config. Pin 0 须设为High (Host interface is set as SPI)

STM32 NUCLEO-F401RE Arduino Connector

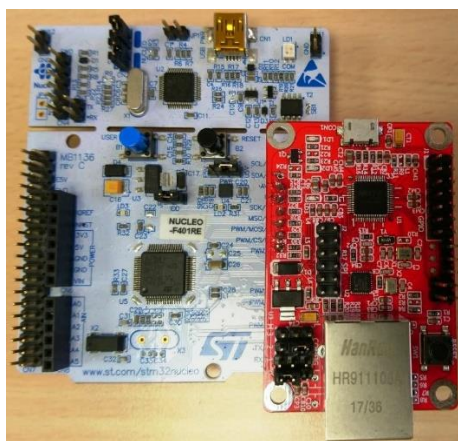


CN5 digital	10	D15	PB8	I2C1_SCL
	10	D15	PB8	I2C1_SCL
	9	D14	PB9	I2C1_SDA
	8	AREF	-	AVDD
	7	GND		ground
	6	D13	PA5	SPI1_SCK
	5	D12	PA6	SPI1_MISO
	4	D11	PA7	TIM3_CH2 or SPI1_MOSI
	3	D10	PB6	TIM4_CH1 or SPI1_CS
	2	D9	PC7	TIM3_CH2
	1	D8	PA9	-

ECM-SK 与 STM32 连接方式

ECM-SK		STM32	
Pin1	Busy (Output)	CN5 Pin2	Input
Pin2	SPI_/SS	CN5 Pin3	SPI1_CS
Pin3	SPI_MOSI	CN5 Pin4	SPI1_MOSI
Pin4	SPI_MISO	CN5 Pin5	SPI1_MISO
Pin5	SPI_CLK	CN5 Pin6	SPI1_CLK
Pin6	GND	CN5 Pin7	ground
Pin7	Power In 3.3V	CN5 Pin8	AVDD(3.3V)

连接俯视图



范例程式

ECMSTM32KEIL.ZIP 以按键方式示范各功能模块用法(Keil 编译环境)

STM32SPI.ZIP 以按键方式示范各功能模块用法(STM32 Cube IDE 编译环境)

STM32SPI2.ZIP 以流程示范控制 4 轴驱动马达(STM32 Cube IDE 编译环境)