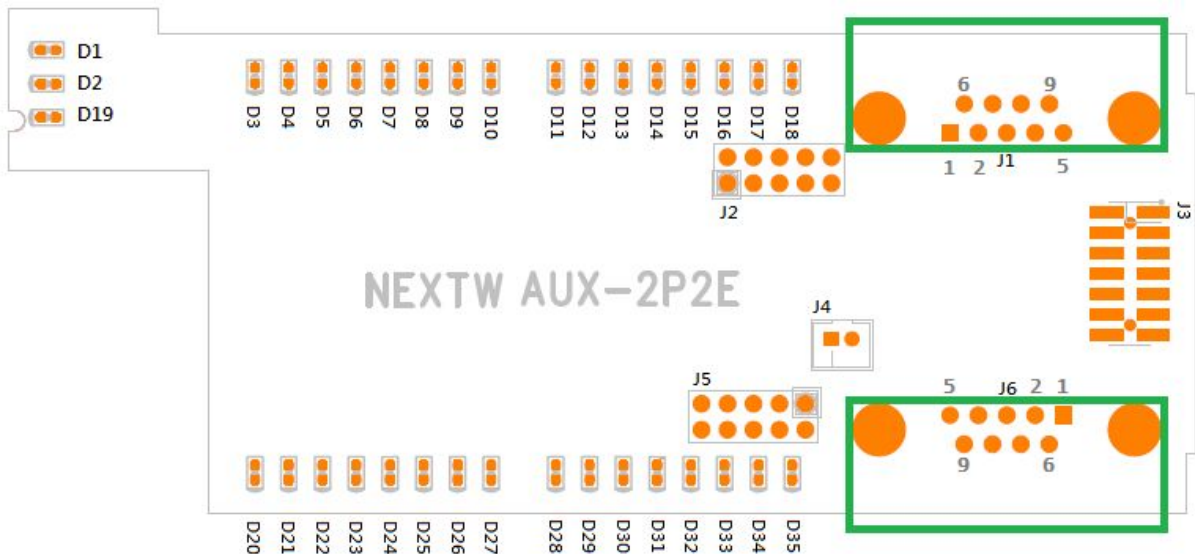


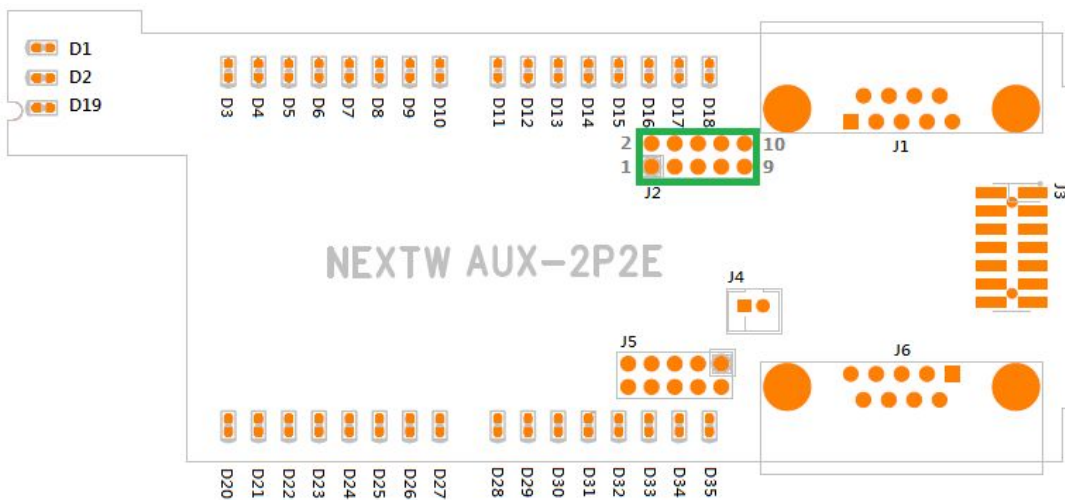
AUX-2P2E ENCODER D-SUB9 Female Connector(J1 / J6)

PIN	NAME	TYPE	Definition
1	ECN0	IN	Index +
2	EBN0	IN	Phase B -
3	EBP0	IN	Phase B +
4	EAP0	IN	Phase A +
5	EAN0	IN	Phase A -
6	GND	Power	Ground 0V
7	GND	Power	Ground 0V
8	5VCC	Power	VCC 5V Output
9	ECP0	IN	Index -
10	FG	Chassis ground	Earth Ground
11	FG	Chassis ground	Earth Ground



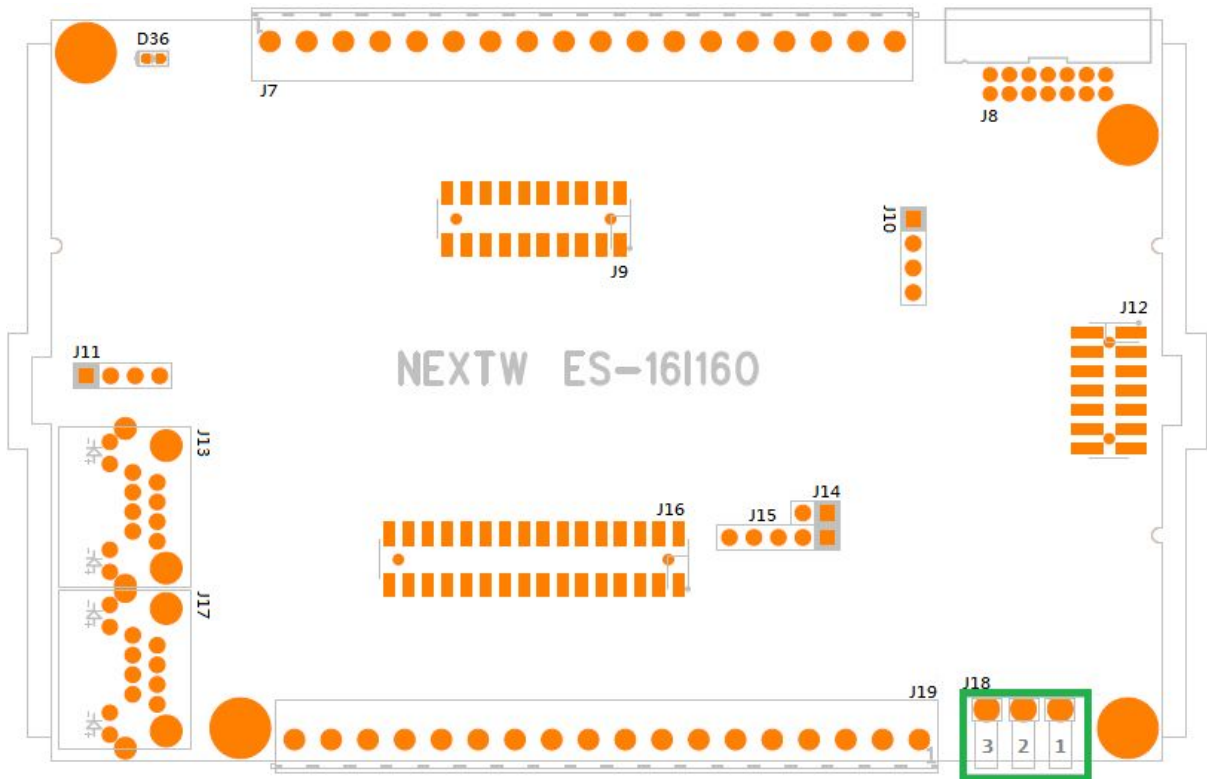
AUX-2P2E (J2)

PIN	NAME	TYPE	Definition
1	PAP0	OUT	Channel 0 positive line of differential CW0+ / P0+
2	PAN0	OUT	Channel 0 negative line of differential CW0- / P0-
3	PBP0	OUT	Channel 0 positive line of differential CCW0+ / D0+
4	PBN0	OUT	Channel 0 negative line of differential CCW0- / D0-
5	PAP1	OUT	Channel 1 positive line of differential CW1+ / P1+
6	PAN1	OUT	Channel 1 negative line of differential CW1- / P1-
7	PBP1	OUT	Channel 1 positive line of differential CCW1+ / D1+
8	PBN1	OUT	Channel 1 negative line of differential CCW1- / D1-
9	GND	PWR	Ground
10	NC	NC	No Connection

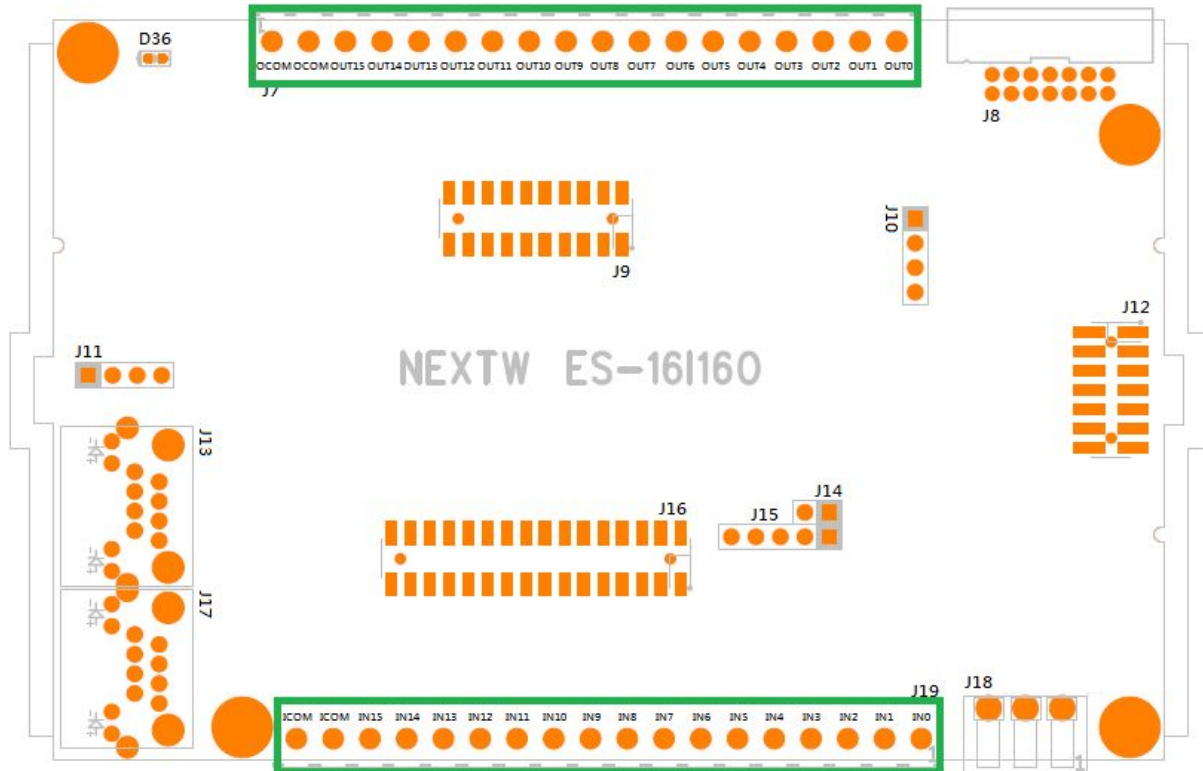


ES-16I16O Power Supply Connector

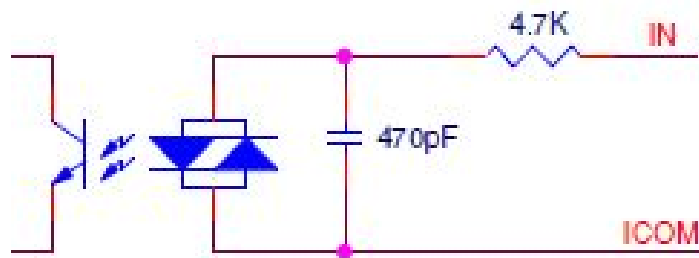
PIN	NAME	TYPE	Definition
1	+24V	PWR	DC Power Supply
2	GND	PWR	DC 0V
3	FG	Chassis ground	Earth Ground



ES-16I16O GPIO (J19/J7)



J19



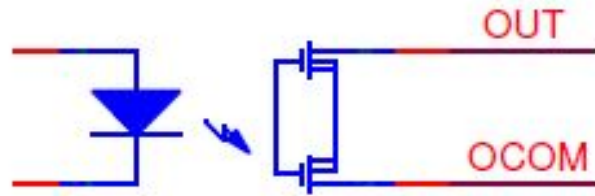
IN0(PIN1)~IN15(PIN16):

- Type: Input
- Isolated Input with 3750 Vrms
- suggest current range: 1mA~50mA
- Peak forward current (t = 10 μ s) : 1A

ICOM(PIN17~PIN18):

- Type: Power
- DC Power Supply
- current limit: 2A

J7



OUT0(PIN18)~OUT15(PIN3):

- Type: Output
- DC Power Supply
- Total current limit 8A
- average current = Total current limit / each signal = 8A / 16CH = 500mA

OCOM(PIN1~PIN2):

- Type: Power
- Isolated Output with 1500 Vrms
- Single max current: 2A
- Suggest Voltage range: 5~60V